



2016

ANNUAL
REPORT



2016 HIGHLIGHTS

LEADERSHIP

- **Kansas City Communities for All Ages Incentive Grants with Municipalities**
- **Missouri Senior Services' Levy Fund Boards**

PARTNERSHIPS

- **Investing and Celebrating Life-long Learning Partnerships**
- **Excelsior Spring Community & Senior Center**
- **Missouri Park and Recreation Organizational Citation Award**
- **Senior Falls Prevention Coalition of Clay and Platte Counties**

- **Northland GrandFamilies**
- **Rural Senior Advocate Program**
- **Benefit and Health Advocate Program**
- **Senior Tax Exchange Program**
- **Tri-County Older Adult Mental Health Program**
- **North Kansas City Hospital Aging in Place Partnership**
- **Kearney Firehouse Tech Café**
- **Assistance League of Kansas City- Senior Outreach Services**
- **Diabetes Education Empowerment Program**
- **Senior Companion Program**



2016 ANNUAL REPORT TO THE CITIZENS OF CLAY COUNTY

2016 marked 10 years of offering life-long learning opportunities with our community partners. Hundreds of seniors have been enriched with fun and engaging classes through our local schools and colleges. This year, CCSS is expanding life enrichment opportunities with a new program called The Aging Mastery Program that has been developed by The National Council on Aging. Clay County is the first area in our region to pilot this program. The Aging Mastery Program is designed to empower older adults to make and maintain small but impactful changes in their lives while also learning practical tips on a range of topics to age well.

It has been amazing what we have been able to accomplish since the Clay County Senior Services' Levy Fund became available in 2005. One of CCSS' early priorities was to partner with our local municipalities to address the need for community senior centers in cities that did not have a dedicated site for meals and activities. CCSS has leveraged city and state funding resources to develop senior centers in the cities of Kearney and Smithville. These centers are warm and inviting and serve an average of 50 Clay County seniors each day of operation. Socialization, exercise, and life-long learning are components of these vital and thriving centers. This year, our funding contribution to the City of Excelsior Springs supplemented the city's sales tax funding to include a new senior center within their new community center. We are proud of the Board of Director's early vision and investment of \$750,000 for three new senior centers in Clay County.

As we start our 13th year, we are experiencing firsthand the growth of our senior population and an increased demand for services to support our older adults. Through our levy fund stewardship and responsible management, we will strive to continue to provide cost effective programming that promotes wellness and healthy living and makes Clay County a wonderful region for our seniors.

Sincerely,




Robert Steinkamp
Board Chairman


Tina Uridge
Executive Director



LEADERSHIP

Kansas City Communities for All Ages Incentive Grants with Municipalities

Through CCSS' incentive match funds, the cities of Gladstone, Excelsior Springs, Liberty, and Kearney have been working with the Mid-America Regional Council and the Communities for All Ages recognition program that encourages communities to respond positively to changing demographics and adopt policy and program approaches that make Clay County a great place to live and age well.

Missouri Senior Services' Levy Fund Boards

Funding for CCSS comes from the Senior Services Levy Fun to support all of our programs. 55 Missouri Counties have passed the levy fund. Each year we gather for a conference that focuses on board governance and oversight, sharing service and program ideas, as well as assisting new counties that want to learn about the senior levy fund option for their region.



Transportation:
541 seniors
served with
7,470 rides.

200
lifelong learners attended
385 thought-provoking
courses through
KU/Osher Institute.

Osher
LIFELONG LEARNING INSTITUTE
AT THE UNIVERSITY OF KANSAS

Enrichment short courses and special events specially developed for folks 50 and better.

No homework. No tests. No pressure. It's just learning for the joy of it!

www.osher.ku.edu

KU
PROFESSIONAL
ACCREDITING
INSTITUTION
The University of Kansas



PARTNERSHIPS

Investing and Celebrating Life-long Learning Partnerships

2016 marked 10 years that CCSS has partnered with area school districts, community colleges, Kansas University's Osher Lifelong Learning Program, and the Kansas City Art Institute to bring a wide variety of enriching classes to our seniors. These programs keep our seniors engaged and connected and encourage socialization and wellness.



Personal Emergency Response System:
Served 1,118.



Home Repairs:
170 home repair jobs and safety modifications were done.



Excelsior Spring Community & Senior Center

\$250,000 was awarded to the City of Excelsior Spring to build a new and vibrant Senior Center within the new Community Center.



Missouri Park and Recreation Organizational Citation Award

CCSS was recognized for our leadership in developing and collaborating to expand health and wellness programs for Clay County seniors.

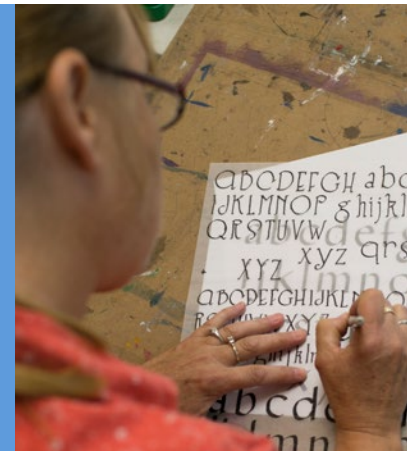
Senior Falls Prevention Coalition of Clay and Platte Counties

Awareness through community falls prevention events, research projects, and evidence-based programming are part of our mission to educate seniors about ways to reduce their risks for falls and to stay strong and healthy to age in place.



We served
233
seniors with housekeeping,
personal care, respite, and
care management.

547
older adults enjoyed
powerful learning
opportunities through our
education scholarships.



Northland GrandFamilies

The number of families served by The Northland GrandFamilies program continues to grow. 172 clients in Clay County attended support group meetings and received case management and referrals to community assistance agencies. Increased awareness of the program was possible because of intensive communication with schools, churches, and community partners.

Rural Senior Advocate Program

Over 400 homes were visited by the Rural Senior Advocate in 2016 and are considered the “primary building block of my program”, according to Gayle Geiger. These visits provide a first-hand perspective on seniors’ needs. The Rural Senior Advocate also continually visits senior centers to spread the word about this program and other community programs. Delivering food boxes and commodities, assisting with applications, attending community partners’ meetings, referring clients to assistance programs, and publishing a quarterly newsletter are all important parts of the Rural Senior Advocate’s efforts.



4,344

senior adults used membership incentives and class discounts to stay physically active.



Benefit and Health Advocate Program

This program is administered through the **Northland Shepherd's Center**. In 2016, 439 older adults learned about and received assistance to apply for benefits valued at \$591,000. In addition, over 900 seniors received insurance counseling, health care coordination, and referrals to outside agencies. Other programs offered by the Northland Shepherd's Center include: **Matter of Balance & PEPPi (Peer Exercise Program Promotes Independence), Home Repair & Safety Modifications, Transportation, Adventures in Learning, BreakTime Club and Learning & Laughter.**

Senior Tax Exchange Program

North Kansas City Schools Senior Tax Exchange Program (STEP) is an intergenerational program that pairs school volunteers to students to help them thrive and succeed in school. Our funding allows an additional 10 volunteers to participate in the program.



More than
6,000
information requests
were answered by phone,
email, and in person.

450
subscribed to
bi-monthly
E-newsletter.



Tri-County Older Adult Mental Health Program

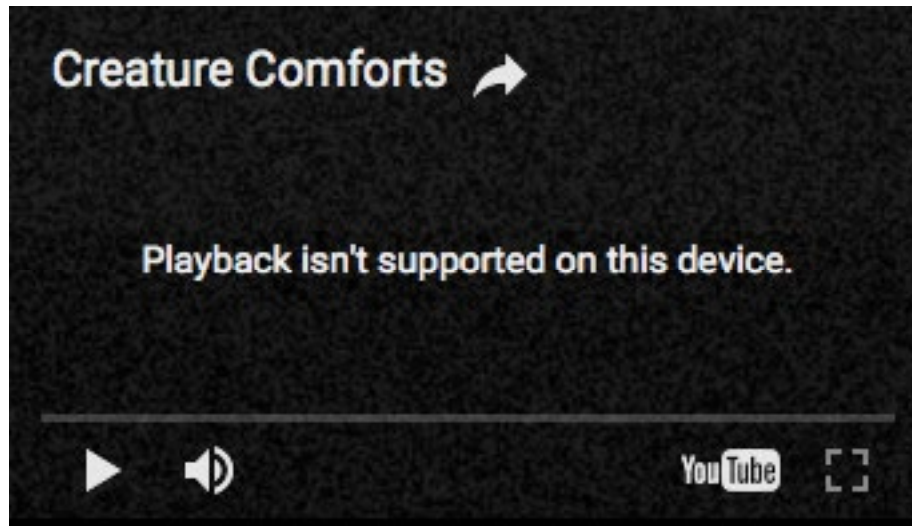
32 training forums related to health and mental wellness were attended by 101 older adults, caregivers, and professionals. 90% of the participants reported a better understanding of the symptoms of depression and how to seek help for mental health issues for themselves or their loved ones. Care Coordination sessions helped 82 clients locate resources and services in our community.

Aging in Place Partnership

North Kansas City Hospital Aging in Place Partnership served 42 older adults returning home from the hospital. The goal of reducing hospital readmission by connecting seniors to support services so they can age in in their own community has had successful outcomes. 67% of those discharged from the program did not have a hospital readmission.

Kearney Firehouse Tech Café

The Tech Café is a public computer and enrichment center focused on the social and digital needs of active senior adults. 576 seniors received computer lab training, assistance with their devices, social media tips, and free internet access for employment opportunities, health insurance and other benefits.



Assistance League of Kansas City - Senior Outreach Services

Assistance League of Kansas City- Senior Outreach Services provides friendship, support, and special programming to residents of five senior care facilities. 26 Volunteers visited 132 senior pals. Special hospitality events are offered and greeting cards are sent to 1,056 residents.

Volunteer, Allison, discovered that her senior pal has had a very hard life and has never been given the opportunity to go to school. Allison is working with her senior pal, learning the alphabet, sounds and starting to teach her to read.

Diabetes Education Program

Three Diabetes Education Empowerment Program series offered through Primaris helped 21 participants take control of their disease through knowledge and self-management skills to help reduce the risk of complications.

Senior Centers

These senior centers receive CCSS funding assistance for daily operations; serving on average 50 participants each day: Smithville Senior Center, Kearney Senior Center, and Liberty Silver Center.

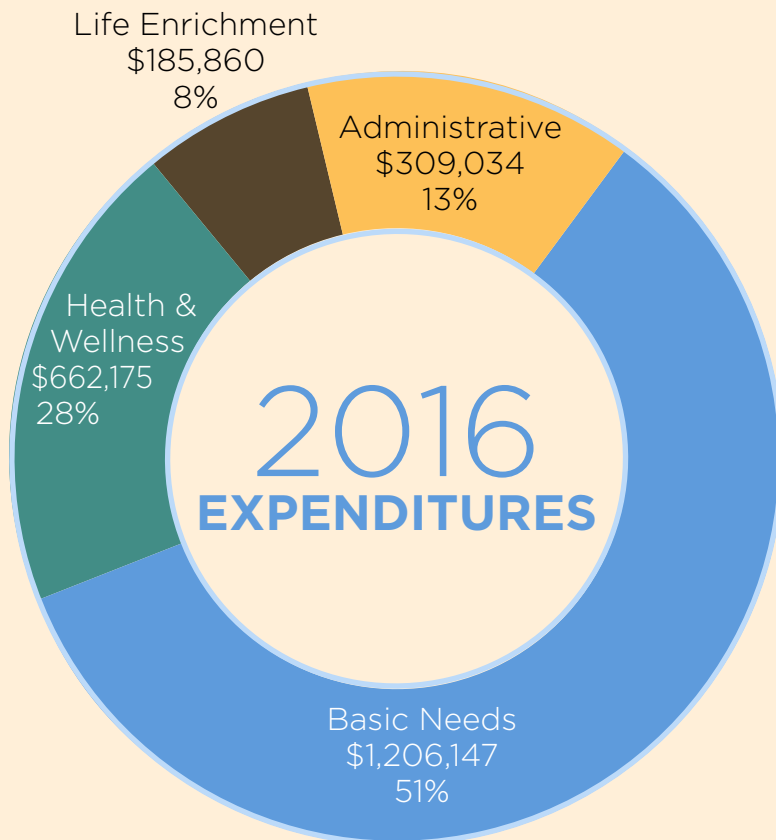
Senior Companions

Shepherd's Center of Kansas City Central offers the Senior Companion Program in Clay County. This program helps low-income seniors earn a small stipend to provide in-home assistance and companionship to other seniors.



2016 FINANCIALS

Total Revenue	\$1,961,687
Total Reserve Funds Used	\$401,529
Total Expenses	\$2,363,216
Net Income	0



Basic Needs	\$1,206,147
Adult Day Health	\$27,600
Care Management	\$155,183
Homemaker / Personal Care	\$447,031
Respite	\$47,442
Minor Home Repair	\$115,000
Meals On Wheels	\$30,567
Personal Emergency Response	\$102,355
Transportation	\$280,968
Health & Wellness	\$662,175
Exercise Programs	\$197,876
Caregiver Training	\$15,027
Senior Centers-Operations	\$151,900
Senior Centers-Capital	\$250,000
Preventive Health	\$40,610
Public Education	\$2,012
Senior Companion	\$4,750
Life Enrichment	185,860
Advocacy	\$59,616
Education	\$96,498
Life Bio	\$625
Program Development	\$12,536
Civic Engagement	\$16,585
Administrative	\$309,034



PARTNERS

Thanks to the following partner agencies:

Assistance League Kansas City	Kearney Senior Center	Rebuilding Together Clay County
Assisted Transportation	Kearney Meals on Wheels	Saint Luke's Northland Hospital—SHAPE Fitness
Barr Private Care	Kearney Enrichment Council	Sally King Consulting
Catholic Charities of Kansas City-St. Joseph, Inc.	Liberty Sports Medicine	Senior Falls Prevention Coalition of Clay and Platte Counties
City of Excelsior Springs	Metropolitan Community Colleges--Maple Woods	Senior Link
City of Gladstone Community Center	Mid-America Regional Council	Shepherd's Center Central
City of Kansas City, Missouri	North Kansas City Hospital	Smithville Senior Center
City of Liberty	North Kansas City Schools Community Education Services	Tiffany In-Home Services
City of Smithville	North Kansas City YMCA	Tri-County Mental Health Center
Clay County Government	Northland Career Center	University of Kansas--Osher Lifelong Learning Institute
Excelsior Springs Area Career Center	Northland Meals on Wheels	University of Missouri--Clay County Extension Center
Excelsior Springs Community Center	Northland Neighborhoods, Inc.	University of Missouri Kansas City—School of Nursing
Good Samaritan Center	Northland Shepherd's Center	William Jewell Arthritis Aquatics Class & Swimnastic Program
Integrity Home Care	OATS, Inc.	
Kansas City Art Institute	Park Hill School District—Community Education	
KC Communities for all Ages	Philips Lifeline Systems	

BOARD & STAFF

2016 BOARD



FRONT ROW:

Melissa Wilson, *Treasurer*
 Su Bacon
 Tina Uridge, *Executive Director*
 Edward O'Herin, *Secretary*

BACK ROW:

Bob Nance
 Michael Maher, *Vice Chair*
 Bill Dane
 Robert Steinkamp, *Chair*

STAFF



Tammy Gillispie, *Office Manager*
 Tina Uridge, *Executive Director*
 Paula Zigmond, *Program and Resources Manager*
 Carolyn Foxworthy, *Operations Administrator*

